

BUTTERMERE ROAD, REDCAR, TS10 1NE



- ▲ Modern Kitchen/Diner
- ▲ Spacious Lounge
- ▲ Beautiful Rear Garden
- ▲ Utility Area

- ▲ Two Double Bedrooms
- ▲ Modern Bathroom
- ▲ Off Street Parking
- ▲ Popular Residential Area

Offers Over £135,000

www.michaelpoole.co.uk

Michael Poole
sales | lettings | auctions



Simply stunning throughout! This fantastic home has a beautiful modern kitchen with a range of integrated appliances and space for a dining table, spacious lounge, two double bedrooms and a modern three-piece bathroom. Perfect for first time buyers.

GROUND FLOOR

ENTRANCE HALL

LOUNGE - 3.84m x 3.89m (max) (12'7" x 12'9" (max))

A stunning lounge with large window allowing plenty of natural light.

KITCHEN/DINER - 2.46m x 4.88m (8'1" x 16')

Modern grey kitchen with an integrated Hoover oven and hob, Bosch microwave, Bosch fridge/freezer and a Kenwood dishwasher. Space for a dining table and chairs and patio doors open to a fantastic rear garden.

FIRST FLOOR

LANDING

BEDROOM ONE - 4.88m (16') (max) x 2.7m (8'10") (max)

A double bedroom with large storage cupboard over the stairs and a modern fitted wardrobe.

BEDROOM TWO - 3.7m x 2.92m (12'2" x 9'7")

A double bedroom with storage cupboard.

BATHROOM - 1.88m x 1.7m (6'2" x 5'7")

A stunning family bathroom with a modern white suite and electric shower over bath.

TO VIEW: Tel: 01642 285041

30-32 Station Road, Redcar, TS10 1AG

www.michaelpoole.co.uk



BUTTERMERE ROAD, TS10 1NE

EXTERNALLY

GARDENS & PARKING

The front of the property benefits from a large, paved driveway leading to a fenced area with two outhouses that have been cleverly designed as a utility area housing the washing machine along with a range of cupboards and an outside toilet. To the rear of the property there is a fabulous, enclosed garden with a large patio area and the rest of the garden is laid to lawn with well-established borders.

AGENTS REF: - EE/LS/RED240178/19022023

Council Tax Band: A **Tenure:** Freehold

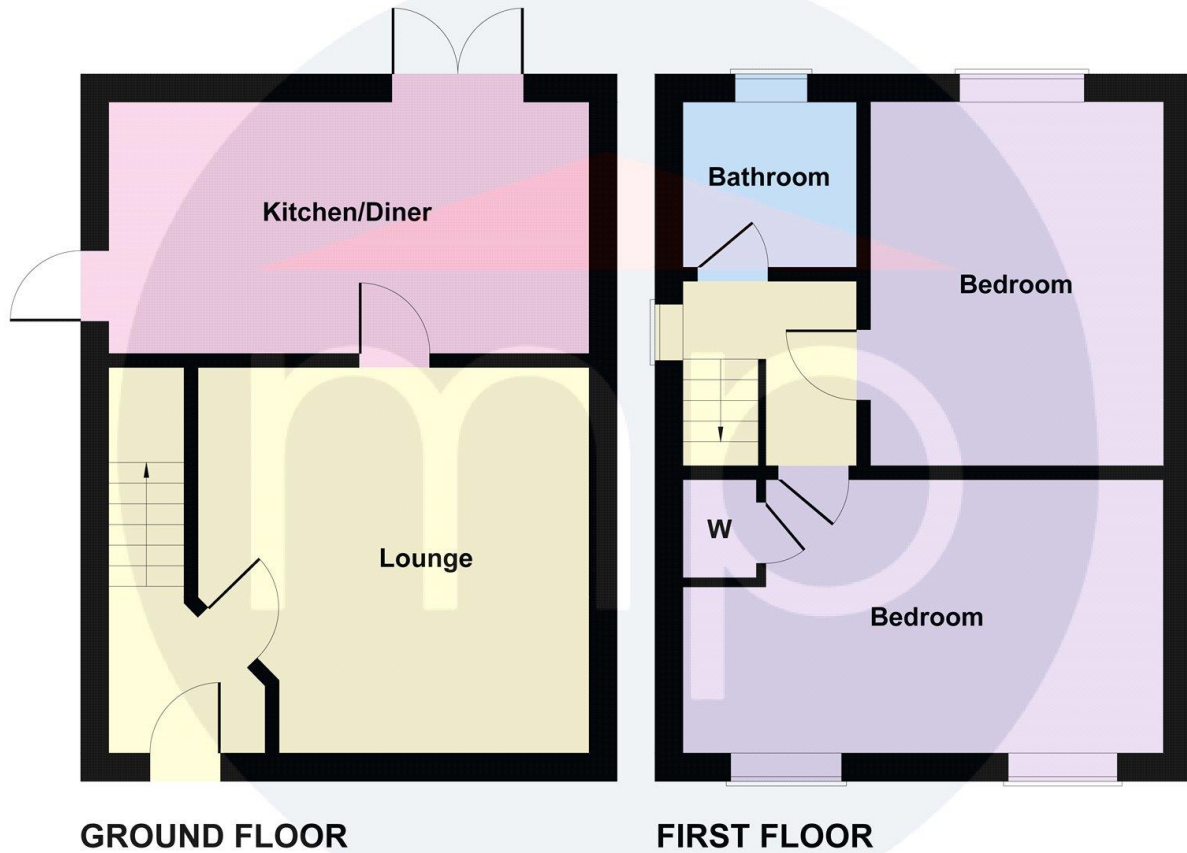
TO VIEW: Contact our Redcar office on
Tel: 01642 285041



BUTTERMERE ROAD, TS10 1NE

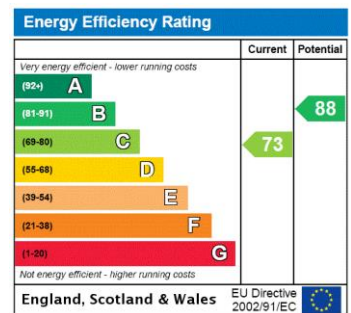


Buttermere Road



Not to Scale. Produced by The Plan Portal 2024
For Illustrative Purposes Only.

The information provided about this property does not constitute or form part of an offer or contract, nor may it be regarded as representations. All interested parties must verify accuracy and your solicitor must verify tenure and lease information, fixtures and fittings and, where the property has been recently constructed, extended or converted, that planning/building regulation consents are in place. All dimensions are approximate and quoted for guidance only, as are floor plans which are not to scale, and their accuracy cannot be confirmed. Reference to appliances and/or services does not imply that they are necessarily in working order or fit for the purpose. We offer our clients an optional conveyancing service, through panel conveyancing firms, via MWU and we receive on average a referral fee of one hundred and thirty pounds, only on completion of the sale. If you do use this service, the referral fee is included within the amount that you will be quoted by our suppliers. All quotes will also provide details of referral fees payable.



TO VIEW: Contact our Redcar Office on Tel: **01642 285041**
30-32 Station Road, Redcar, TS10 1AG